



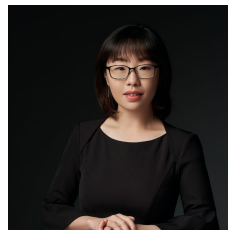
6/117 Bowden Street Ryde NSW

1 1

Perfectly located within the bustling suburb of Meadowbank, this premium one-bedroom apartment is the epitome of convenience, located just 300m to Meadowbank Station and buses accessing City CBD, Ryde, Gladesville and Macquarie University. Furthermore, local cafes, shops and fitness centers litter the surrounding area, with a 10 minute walk accessing Shepherds Bay Village Plaza and a 15 minute stroll accessing the idyllic Shepherds Bay waterside and Meadowbank Wharf (from which the Meadowbank Ferry service departs).

Within its spacious interior, the integrated living and dining area flows seamlessly onto a sunlit balcony, with its East-facing aspect ensuring that the living/dining area is consistently drenched with abundant sunlight and fresh air.

Type : Apartment
Price : Contact Agent
View : <https://www.frankadaproperty.com.au/sale/nsw/northern-suburbs/ryde/residential/apartment/8351063>

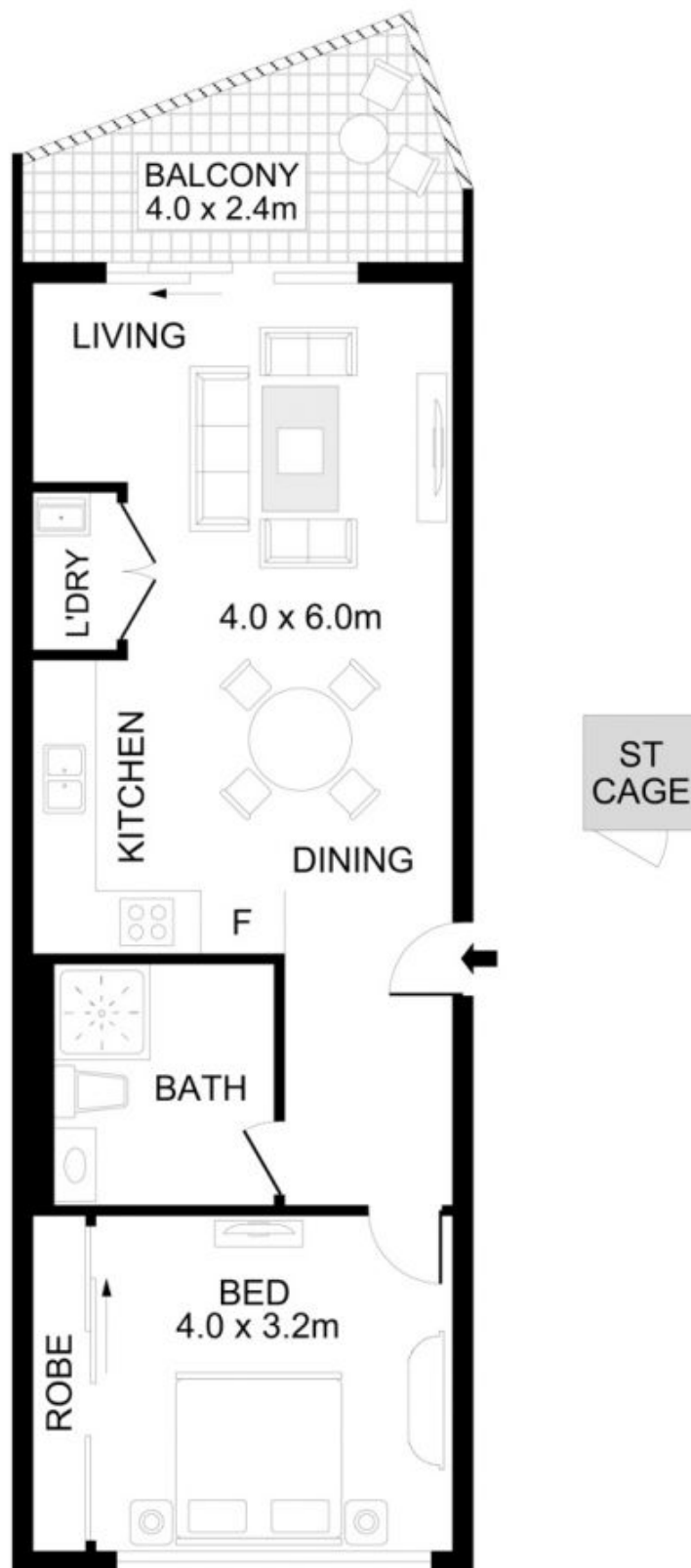


Yiran Zeng
02 9191 3109



Michael Wan
91913109

[For full version visit the website](https://www.frankadaproperty.com.au)



ST
CAGE

INTERNAL AREA : 48 SQM
BALCONY AREA : 7 SQM
TOTAL AREA : 55 SQM

6/117 Bowden Street, Ryde



Disclaimer- Floor Plan measurements are approximate and are for illustrative purposes only. While we cannot doubt the floor plans accuracy , we make no guarantee , warranty or representation as to the accuracy and completeness of the floor plan